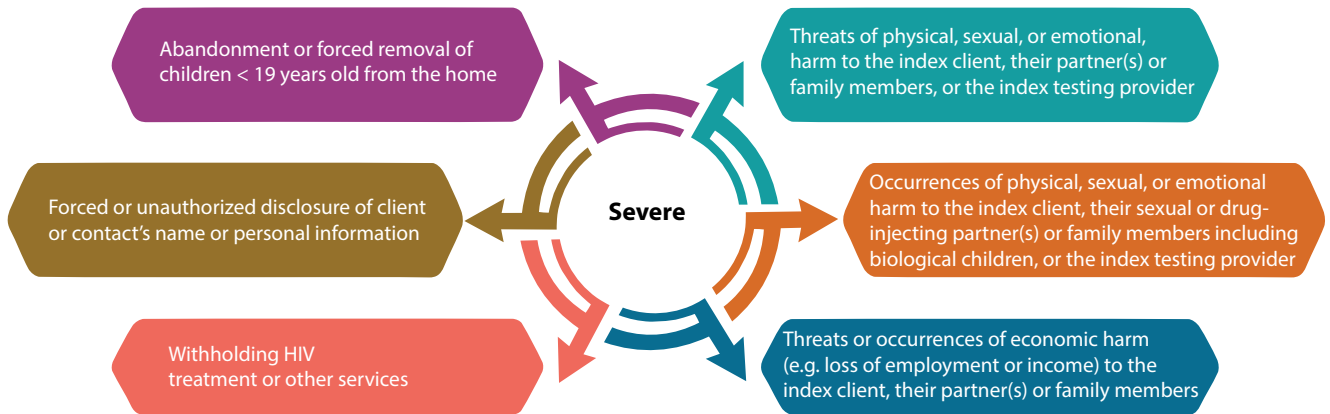


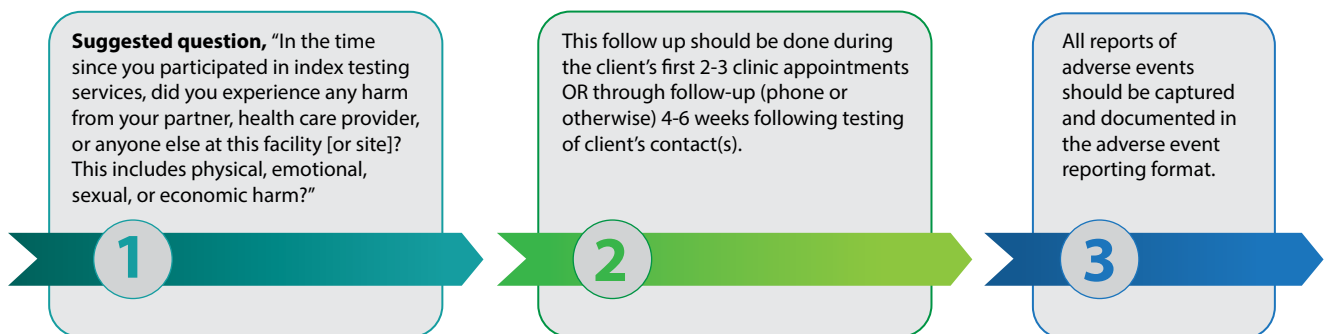
SOP on Adverse Events (AE) Monitoring System Related to Index Testing

A system for detecting, monitoring, reporting and following up on (i.e., implementing solutions) any adverse events that occur as a result of participating in Index Testing services (i.e., all 10 Steps).

Adverse Events Categories



Identifying Adverse Events



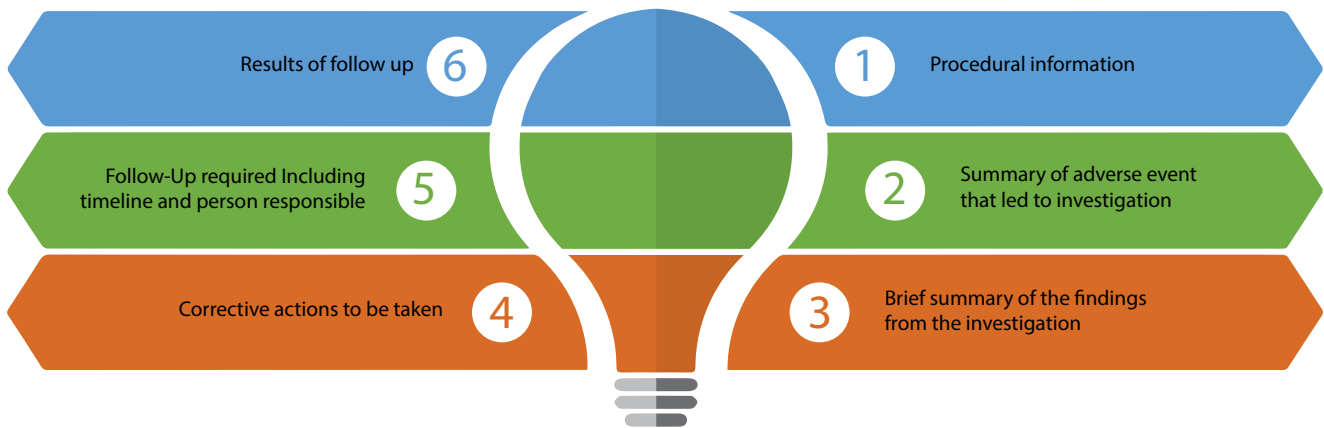
Note: an unintended negative outcome as result of HIV disclosure could still occur in the future and, as such, follow up should occur while all contacts are being actively traced.

Investigating and responding to Adverse Events

All reports of serious or severe adverse events (from site monitoring, community monitoring, and/or client feedback) must be investigated. Follow-up steps and actions should be identified to prevent similar adverse events from occurring in the future. If an adverse event is determined to be a result of a provider's failure to abide by the minimum standards for index testing, he or she should immediately stop offering services until remedial actions can occur.

Investigate each reported AE and follow-up

For investigating Adverse Events, the following steps are important:



Clients who experience adverse events should be linked to appropriate services as required. Community monitoring mechanism like Community Advisory Board (CAB) may be utilized. These services may be as follows:

